



**India Meteorological Department
(Ministry of Earth Sciences)**

BULLETIN NO. 3 (BOB/06/2022)

TIME OF ISSUE:1930 HOURS IST

DATED: 14.08.2022

FROM: INDIA METEOROLOGICAL DEPARTMENT (FAX NO. 24643965/24699216/24623220)

TO: CONTROL ROOM, NDM, MINISTRY OF HOME AFFAIRS (FAX.NO. 23093750)

CONTROL ROOM NDMA (FAX.NO. 26701729)

CABINET SECRETARIAT (FAX.NO.23012284, 23018638)

PS TO HON'BLE MINISTER FOR S & T AND EARTH SCIENCES (FAX NO.23316745)

SECRETARY, MOES (FAX NO. 24629777)

H.Q. (INTEGRATED DEFENCE STAFF AND CDS) (FAX NO. 23005137/23005147)

DIRECTOR GENERAL, DOORDARSHAN (23385843)

DIRECTOR GENERAL, AIR (23421105, 23421219)

PIB MOES (FAX NO. 23389042)

UNI (FAX NO. 23355841)

D.G. NATIONAL DISASTER RESPONSE FORCE (NDRF) (FAX NO. 26105912, 2436 3260)

DIRECTOR, PUNCTUALITY, INDIAN RAILWAYS (FAX NO. 23388503)

CHIEF SECRETARY, ODISHA (FAX NO. 0674-2536660)

CHIEF SECRETARY, WEST BENGAL (FAX NO. 033-22144328)

CHIEF SECRETARY, TAMILNADU (FAX NO. 044-25672304)

ADMINISTRATOR, ANDAMAN & NICOBAR ISLANDS (FAX NO. 03192- 232656)

CHIEF SECRETARY, PUDUCHERRY (FAX NO 0413-2334145)

CHIEF SECRETARY, ANDHRA PRADESH (FAX NO. 0863-2441029, 08645-246600)

CHIEF SECRETARY, GOVT. OF CHATTISGARH (FAX NO. 771-2221206)

CHIEF SECRETARY, GOVT. OF JHARKHAND (FAX NO. 651-2400255)

CHIEF SECRETARY, GOVT. OF MADHYA PRADESH (FAX NO. 755-2441076)

Sub: Depression over South Jharkhand and adjoining North Odisha

The depression over coastal West Bengal & adjoining North Odisha moved west-northwestwards with a speed of 25 kmph during last 6 hours and lay centered at 1730 hours IST of today, the 14th August over South Jharkhand & adjoining North Odisha near latitude 22.1⁰N and longitude 86.0⁰E about 80 km south-southwest of Jamshedpur (Jharkhand) and 70 km north-northeast of Keonjargarh (Odisha).

It is very likely to continue to move west-northwestwards and maintain the intensity of depression during next 24 hours.

Warnings:

(i) Rainfall:

Odisha: Rainfall at most places with heavy to very heavy rainfall at a few places with extremely heavy rainfall at isolated places very likely on 14th August. The intensity of rainfall would decrease on 15th August with isolated heavy rainfall over western Odisha.

Gangetic West Bengal: Rainfall at most places with heavy to very heavy rainfall at isolated places likely over coastal districts on 14th August.

Jharkhand: Rainfall at most places with heavy to very heavy rainfall at isolated places likely over south Jharkhand and isolated heavy rainfall over north Jharkhand on 14th August

Chattisgarh: Rainfall at most places with heavy to very heavy rainfall at a few places with extremely heavy rainfall at isolated places on 14th August and heavy to very heavy rainfall at isolated places on 15th August

East Madhya Pradesh: Rainfall at most places with heavy to extremely heavy rainfall at isolated places on 14th and heavy to very heavy rainfall at isolated placed on 15th August.

West Madhya Pradesh: Rainfall at most places with heavy to very heavy rainfall at isolated places on 14th and 16th and heavy to extremely heavy rainfall at isolated placed on 15th August

(ii) Wind:

Squally wind speed reaching 45-55 kmph gusting to 65 kmph is very likely over north and adjoining central Bay of Bengal and along & off Bangladesh, West Bengal, Odisha and adjoining North Andhra Pradesh coasts on 14th August and gradually decrease thereafter

(iii) Sea condition

Sea condition is likely to be rough to very rough over north and adjoining central Bay of Bengal and along & off Bangladesh, West Bengal, Odisha and adjoining North Andhra Pradesh coasts on 14th August and gradually improve thereafter.

(iii) Fishermen Warning

Fishermen are advised not to venture into north and adjoining central Bay of Bengal and along & off Bangladesh, West Bengal, Odisha and adjoining North Andhra Pradesh coasts till 15th August morning.

System is under continuous surveillance and the next message will be issued at 0230 hours IST of 15th August, 2022.

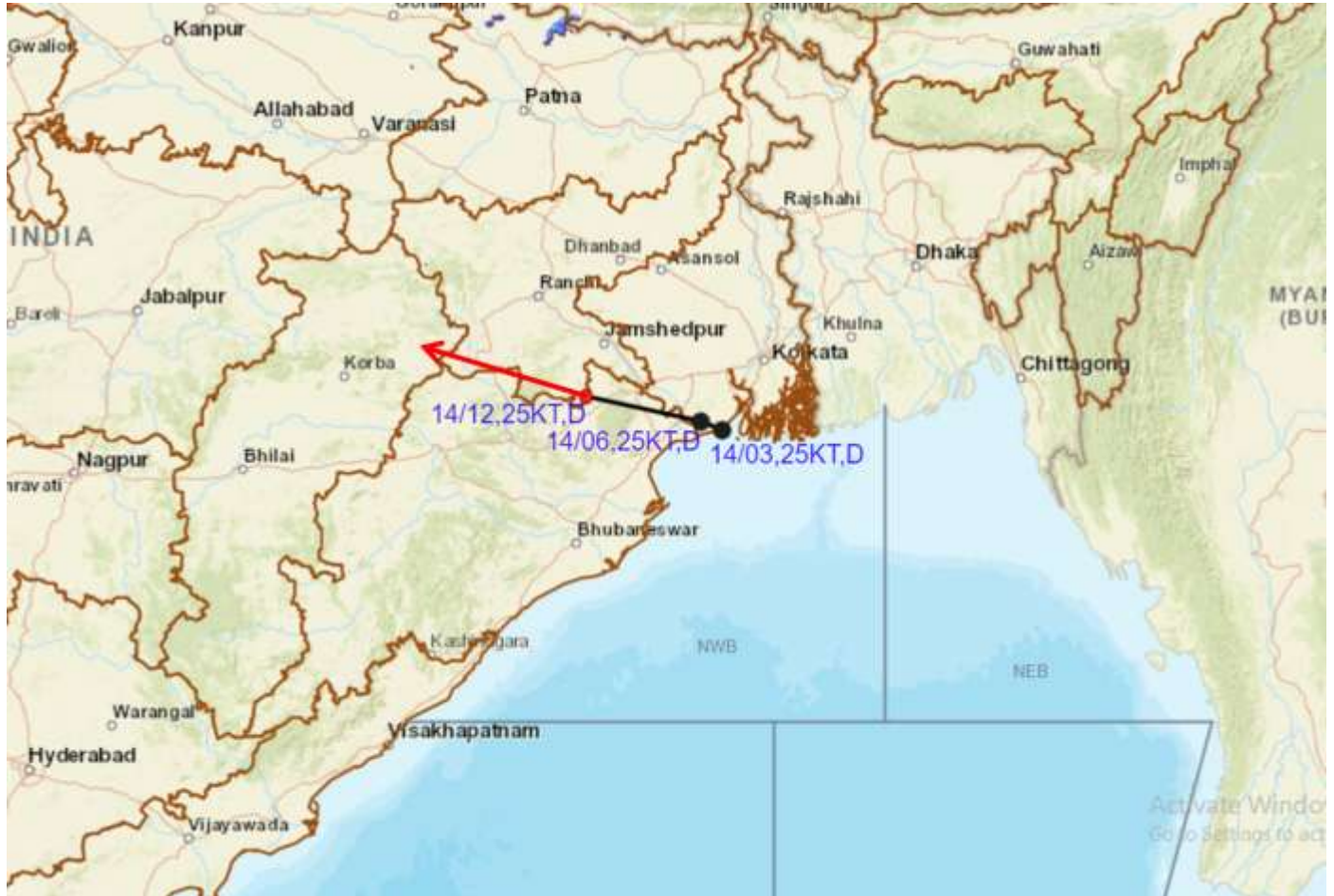
(M. Sharma)
Scientist D, Cyclone Warning Division, New Delhi

Copy to: ACWC Mumbai/ ACWC Kolkata/ ACWC Chennai/ CWC Bhubaneswar/CWC Visakhapatnam/CWC Ahmedabad/ MO Port Blair/MC Raipur/MC Bhopal/MC Hyderabad/RMC Nagpur/MC Goa/MC Bengaluru/CWC Thiruvananthapuram

LEGEND: Heavy Rainfall: 64.5 to 115.5mm, **Very Heavy Rainfall:** 115.6 to 204.4mm **Most Places:** more than 76% of total stations, **Isolated Places:** Less than 25% of total



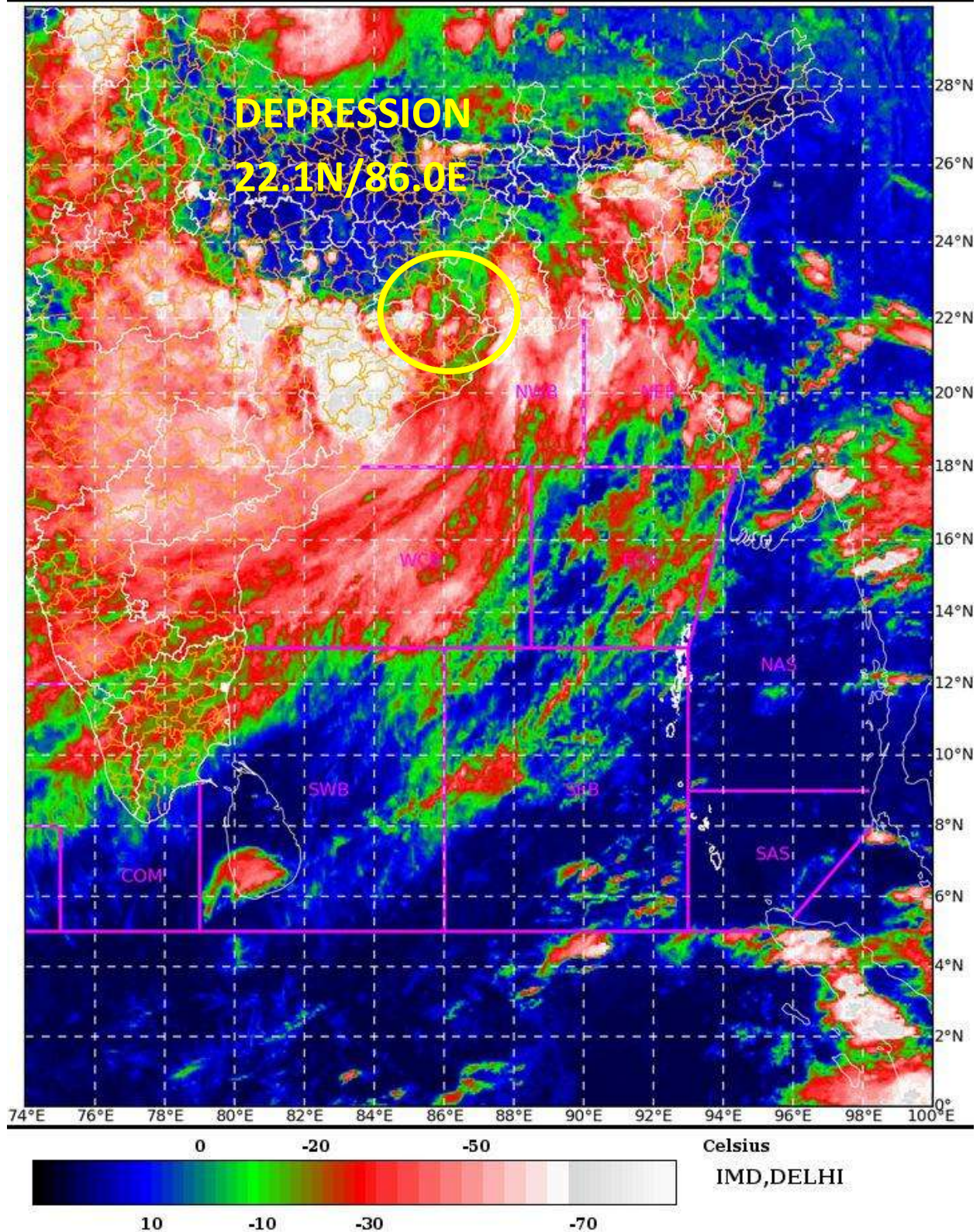
OBSERVED AND FORECAST TRACK OF DEPRESSION OVER SOUTH JHARKHAND AND ADJOINING NORTH ODISHA BASED ON 1200 UTC OF 14th AUGUST, 2022



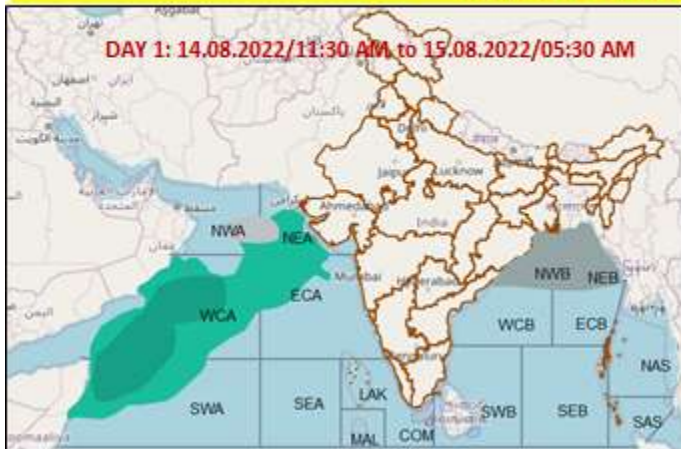
DATE/TIME IN UTC
 IST=UTC + 0530
 L: LOW PRESSURE AREA
 WML: WELL MARKED LOW PRESSURE AREA
 D: DEPRESSION (17-27 KT)
 DD: DEEP DEPRESSION (28-33 KT)
 CS: CYCLONIC STORM (34-47 KT)
 SCS: SEVERE CYCLONIC STORM (48-63KT)
 VSCS: VERY SEVERE CYCLONIC STORM (64-89 KT)
 ESCS: EXTREMELY SEVERE CYCLONIC STORM (90-119 KT)
 SuCS: SUPER CYCLONIC STORM (≥ 120 KT)

- LESS THAN 34 KT
- 34-47 KT
- ≥ 48 KT
- OBSERVED TRACK
- FORECAST TRACK
- CONE OF UNCERTAINTY

SAT : INSAT-3D IMG 14-08-2022/(1230 to 1256) GMT
IMG_TIR1_TEMP 10.8 um 14-08-2022/(1800 to 1826) IST
L1C Mercator

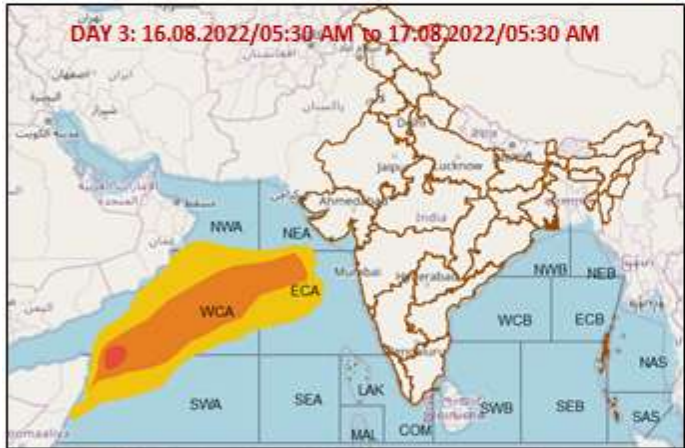
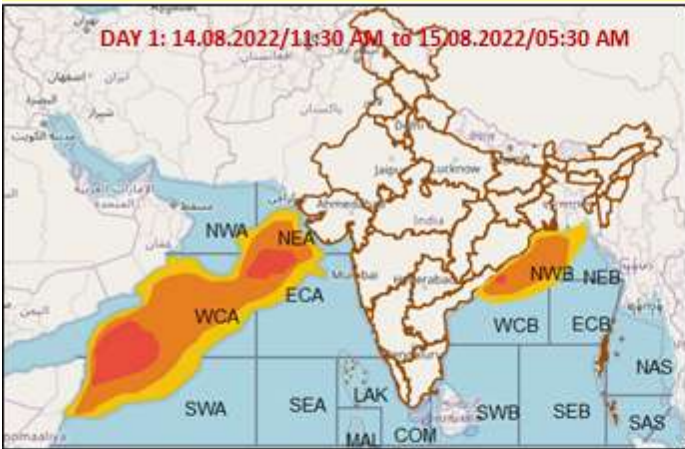


Fishermen Warning Graphics

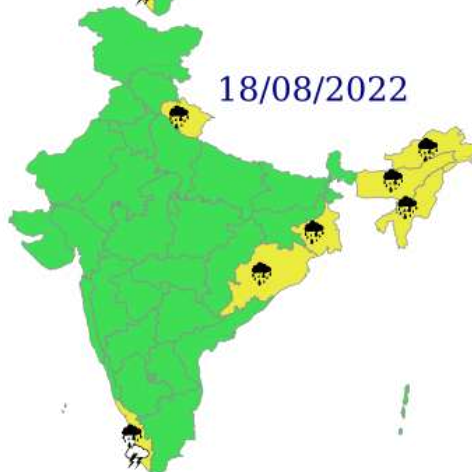
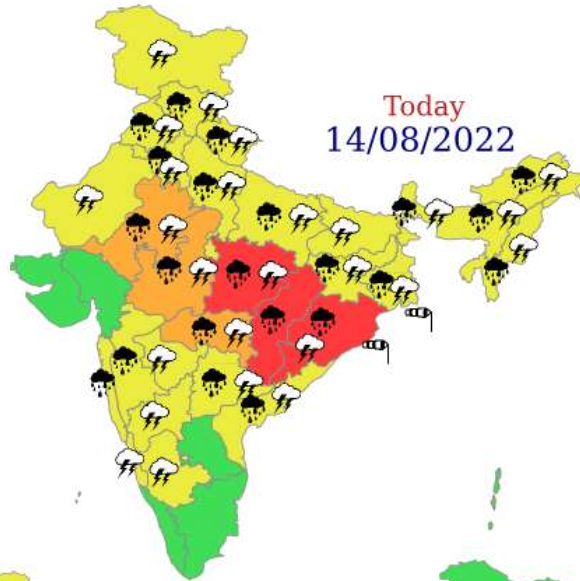


	Squally WX with wind speed 40-50 gusting to 60 kmph
	Squally WX with wind speed 45-55 gusting to 65 kmph
	Squally wind speed 45-55kmph gusting to 65 kmph
	Squally wind speed 50-60kmph gusting to 70 kmph

Probability of exceedance of maximum sustained winds ≥ 45 kmph



	Probability of exceedance
	Low (1-33%)
	Moderate (34-67%)
	High (68-100%)



- | | | | |
|--------------|------------|--------------|--------------|
| Heavy Rain | Heavy Snow | Thunderstorm | Dust Storm |
| Strong Winds | Visibility | Cyclone | Squall/ Hail |
| Frost | Cold Wave | Heat Wave | Sea State |